

**CARC**

**Building Values**



# VISION

*CRC strives to become a highly dedicated **customer-driven** real estate company. A top market leader in terms of **timely delivery** of top quality **sustainable** living and commercial spaces, which are **well-crafted, efficient, and of superior value.***



# MISSION

*To attain a top position in the country in Real Estate for **performance cycle, business transparency, ethical practices, and sustainability.***



*Delivering 857  
happy homes to  
happy families*





**ACTUAL IMAGES**

**CRC**

Building Values

**NOW**

**UNVEILING**



*CRC*  
**JoyOUS**  
— your home your joy —



**Plot No.8A**

**Techzone - IV**

**Greater Noida West**





CRC Joyous

CRC Sublimis

AMRAPALI DREAM VALLEY  
आम्रपाली ड्रीम वैली

TECHZONE 4

SUPERTECH ECO VILLAGE-1

BLOCK-B  
ब्लॉक-B

AROGAYA HOSPITAL  
आरोग्य हॉस्पिटल

Yatharth Super Speciality Hospital Noida Extension  
यथार्थ सुपर स्पेशलिटी...

The MCG (Mera Cricket Ground) by Arnav

Axis Bank Branch

PACIFIC WORLD SCHOOL

Sarvottam International School...  
सर्वोत्तम इंटरनेशनल स्कूल

Bhutani Grandthum

St. John's School  
स्ट. जॉन्स विद्यालय

Ishya Creation

Aster Public School  
एस्टर पब्लिक स्कूल

Florence International School  
फ्लोरेंस इंटरनेशनल...

Authority Villas Pocket

Jai Maa Bhagwati Properties Pvt

Aryan International School  
आर्यन इंटरनेशनल विद्यालय

Milak Lachhi  
मिलक लछी

Eros Sampoornam Noida Extension

Keylook beauty parolur  
ला रेज़िडेन्शिया

GOLDEN I  
गोल्डन I

ACE ASPIRE

AMRAPALI LEISURE VALLEY  
आम्रपाली लेज़र वैली

APEX ALPHABET  
एपेक्स अल्फाबेट

Apex Golf Avenue

Supertech Eco village-1  
सुपरटेक इको विलेज-1

Wings Cricket Ground(WCG)

Spring Homes

Curious Mug  
करिओउस मुग

Capital Athena Sec-1, Greater Noida West  
कैपिटल एथेना सेक्टर-1, ग्रेटर...

Excellence cricket ground

Corporate Cricket Ground

CA CRICKET GROUND 2  
सका क्रिकेट ग्राउंड 2

H-ARENA  
द प्रानव बिग बेश एरिना  
अरुण एंड प्रणव

Wonderer's Cricket Ground, Greater Noida  
वंडरर्स क्रिकेट ग्राउंड, ग्रेटर...

Cricket Point (Cricket Ground -1)

Hindon River

SECTOR 3  
सेक्टर 3

GoMechanic -  
गोमेकेनिक - अल्फा...

OM residency  
OYO 35661 OM  
रेज़िडेन्सी

Bloom International School  
ब्लूम इंटरनेशनल विद्यालय

PRASHANT APARTMENT-1

Amrapali Dreamvalley

St Xavier's High School  
एसटी जेवियर्स हाई स्कूल

Lotus Valley International School  
लोटस वैली इंटरनेशनल...



Ryan International School Noida Extension  
रियान इंटरनेशनल स्कूल, नोएडा...

Amrapali Dreamvalley

Prashant Apartment 1

Teevra Cricket Ground  
तीव कrikेट ग्राउंड

Samridhi Grand Avenue  
समृद्धि ग्रेंड एवेन्यू

ENKAY SOLAR POWER INFRASTRUCTURE...

इनके सोलर पावर इन्फ्रास्ट्रक्चर...

Roza Post



Habitech Park

KVD Windpark, Greater Noida  
केवीडी विंडपार्क...



PACIFIC WORLD SCHOOL

Axis Bank  
एक्सिस बैंक

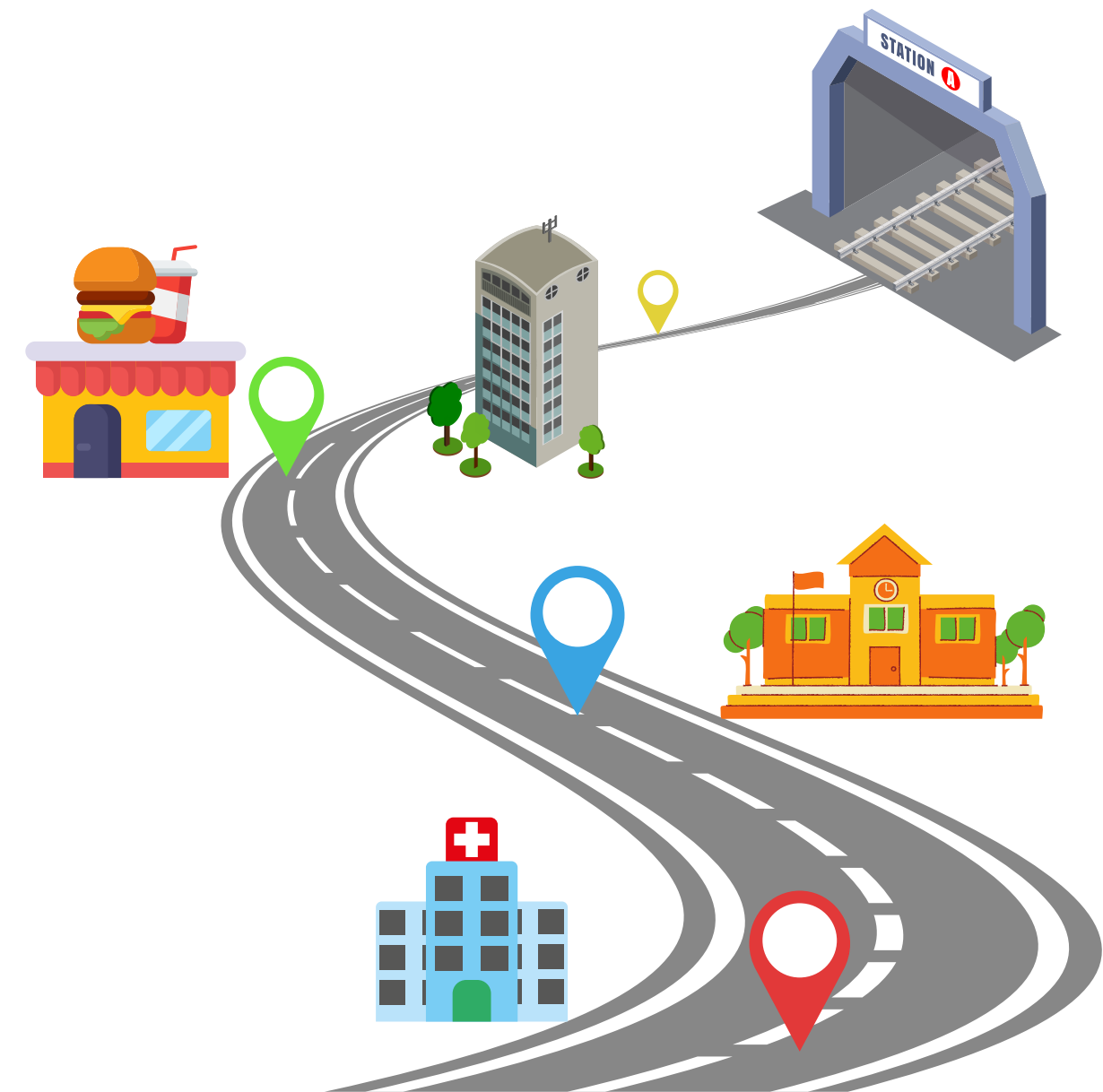
Tandoor-E-Kitchen  
तंदूर-E-किचन

The Shri Ram Universal School  
श्री राम युनिवर्सल...

Hanuman Temple  
हनुमान मंदिर

# CONNECTIVITY

- 0 mins from Noida
- 5 mins drive from Sector-78,79 Noida
- Proposed Metro Station at 100m distance
- 12 schools in 2km radius
- Buzzing shopping malls in close proximity
- 2 Hospitals in 2km radius
- Recreational Hubs within 1 km
- SEZ area in vicinity with operational MNCs



# TEAM OF EXPERTS

**Architect  
Hafeez  
Contractor**

*(Architect Team)*



**INTEGRAL DESIGNS  
INTERNATIONAL STUDIO PVT. LTD.**

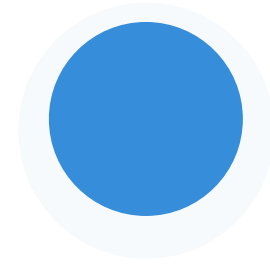
*(Landscape Design)*



*(MEP Consultants)*

# PLOT DETAILS

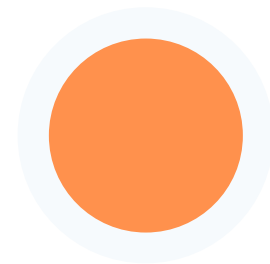
F.A.R  
**3.5**



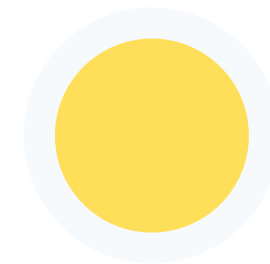
SALEABLE  
**8lac sq.ft.**

PLOT AREA  
**16,000 sq.mtr**  
**4 acres**

TOTAL UNITS  
**536**



TOTAL TOWERS  
**4**



6 0 M W I D E R O A D



**AMENITIES AT GROUND LEVEL**

- 1. ARRIVAL PLAZA
- 2. RETAIL COURT
- 3. TOWER DROP OFF
- 4. 7.5 M WIDE DRIVEWAY
- 5. STILT PARKING DROP OFF
- 6. RAMP UP TO PODIUM
- 7. FEATURE WALL
- 8. SERVICES
- 9. GARDEN
- 10. PLANTER
- 11. FEATURE COLUMNS
- 12. KIDS PLAY AREA
- 13. SEATING PLAZA
- 14. BAMBOO GARDEN
- 15. TROPICAL GARDEN

**AMENITIES AT PODIUM LEVEL**

- 1. PODIUM ENTRY / EXIT
- 2. SWIMMING POOL
- 3. SWIMMING POOL DECK
- 4. KIDS POOL
- 5. SWIMMING POOL JACUZZI
- 6. SWIMMING POOL BAR
- 7. CELEBRATION LAWN
- 8. PAVILION
- 9. CHIT CHAT PLAZA
- 10. MULTIPURPOSE FEATURE
- 11. KIDS ZONE
- 12. KIDS ZONE
- 13. MULTIPURPOSE COURT
- 14. OUTDOOR GYM
- 15. SKATING RINK
- 16. TOWER ENTRY
- 17. PARTY LAWN
- 18. YOUTH LAWN
- 19. YOGA LAWN
- 20. SCULPTURE COURT
- 21. MEDITATION LAWN
- 22. BUTTERFLY GARDEN
- 23. FLOWER GARDEN
- 24. ELDERLY COURT
- 25. SEATING ALCOVE
- 26. ACCUPRESSURE PARK
- 27. 1.8M WIDE JOGGING TRACK
- 28. 7.5M WIDE FIREPATH
- 29. STEPPING STONES
- 30. MOUND
- 31. LAWN (OTHER'S)
- 32. RAILING
- 33. WICKET GATE
- 34. PLANTING BED
- 35. LAWN TENNIS COURT





 **REPLICA**



REPLICA



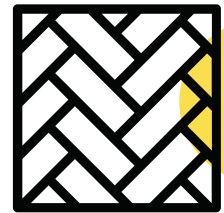
**REPLICA**





REPUBLIC

# SPECIFICATIONS



## FLOORING

- Living and dining - Vitrified tiles flooring (4' x 2')
- Bedrooms - Wooden/vitrified tile flooring, Kitchen - vitrified tiles; Toilets - Ceramic tiles
- Staircase & landings - kota flooring/ marble or equivalent, balconies - anti-skid ceramic flooring.



## DADO

- Ceramic tiles of required height in toilets & 600mm height above kitchen counters slab in appropriate color & paint.



## EXTERIOR

- Appropriate finish of texture paint of exterior grade or equivalent.



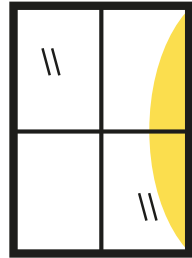
## PAINTING

- Plastic emulsion of appropriate color on interior walls & ceilings.



## KITCHEN

- All kitchen counters - pre-polished granite/premium-marble, electrical points for kitchen chimney & hob.
- Stainless steel sink, premium cp fitting. (Grohe/ Kohler / Jaquar)



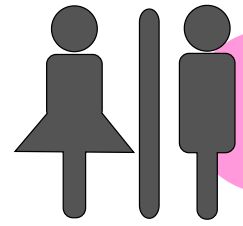
## DOOR & WINDOWS

- Entrance door- 8 feet high polished hard wood frame, laminated flush door.
- Internal door high polished-hard wood frame, laminated flush door.
- External door-upvc/powder coated aluminum.
- Window-aluminum composite powder coated with anodized aluminum hardware along with additional one wire mesh panel in toilets.



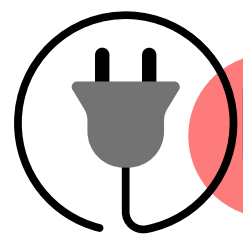
## PLUMBING

- As per standard practice, all internal plumbing in GI/CPVC/Composite.



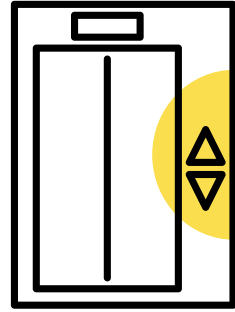
## TOILET

- Premium sanitary fixtures.
- Premium chrome plated fittings.
- Glass shower enclosure in master toilet.
- Granite top counter with basin.
- Wall mounted WC (Jaquar/ Kohler / Hindware)



## ELECTRICAL

- All electrical wiring in concealed conduits; provision for adequate light & power points.
- Telephone & T.V outlets in drawing, dining and all bedrooms; molded modular plastic switches & protective MCB's. (Havells/ Polycab equivalent)



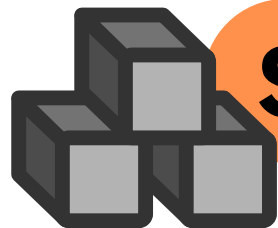
## LIFT

- 2 Passenger elevators
- 1 Service elevator



## GENERATOR

- Generator to be provided for 100% backup of emergency & safety facility, lifts & common areas.



## STRUCTURE

- Earthquake resistance rcc framed structure as per applicable seismic zone.



## SECURITY

- Provision for network wire, perimeter security and entrance lobby security with cctv cameras,
- Fire prevention, suppression, detection & alarm system as /per fire norms

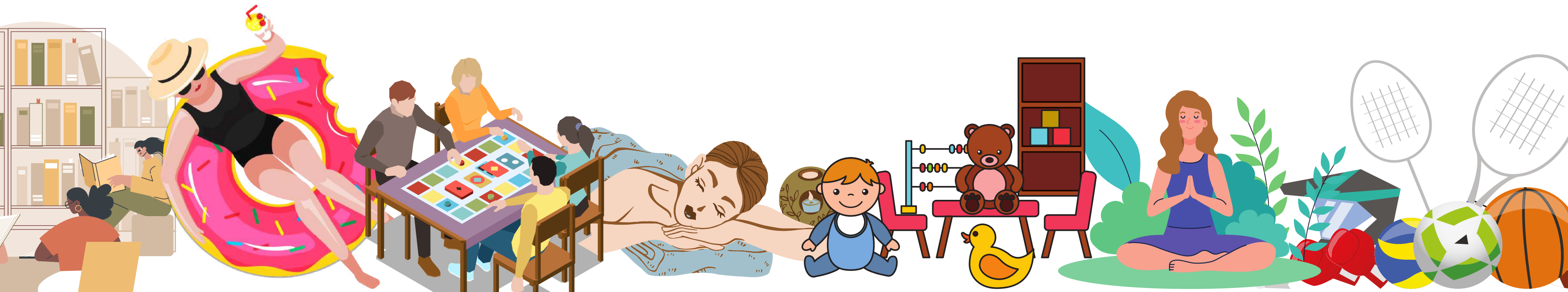


## LOBBY

- Spacious air conditioned lobby
- Italian / Imported Marble Flooring
- Mitsubishi Or equivalent lifts
- Wall cladding on Lift lobbies
- Granite flooring on typical lift lobby
- Wall cladding with elegant combination of Granite/ Tile/ Marble/ Inlay pattern as per design.
- Resort style with water feature drop offs

# AMENITIES

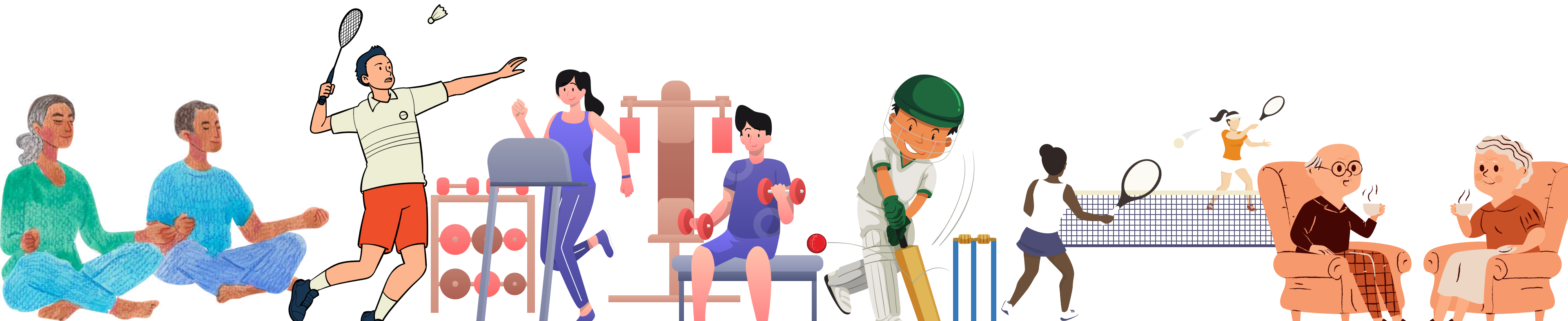
- Library
- Café & Lounge
- Swimming Pool
- Crèche
- Multi-purpose hall
- Indoor & Outdoor Sports Area
- Playgrounds
- Spa
- Yoga Centre
- Board Game Rooms





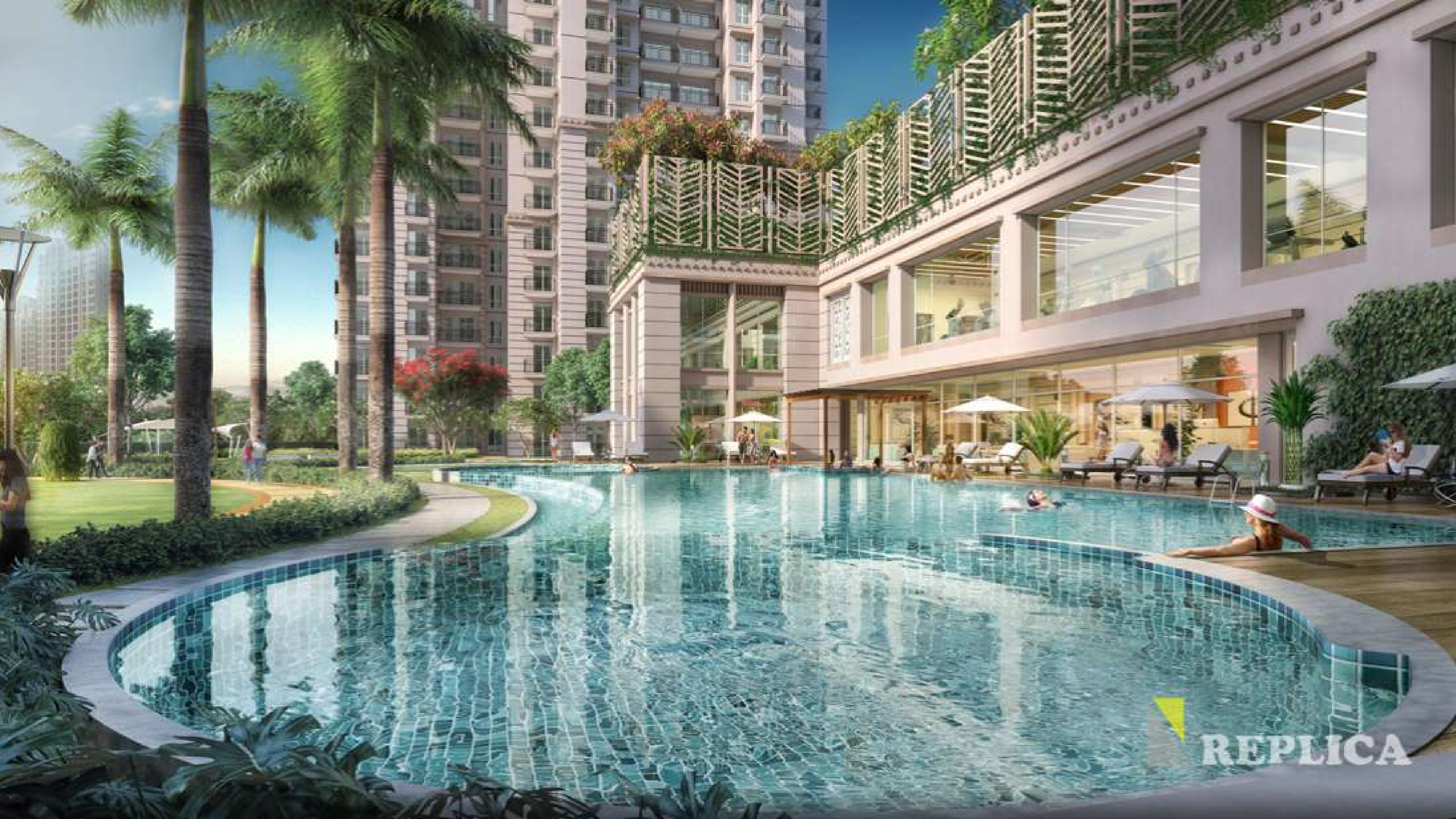
# AMENITIES

- Meditation Zone
- Gym
- Badminton Court
- Squash Court
- Lawn Tennis Court
- Cricket Pitch
- Acupressure Pathway
- Amphitheatre
- Special Area for elderly citizen





REPLICA

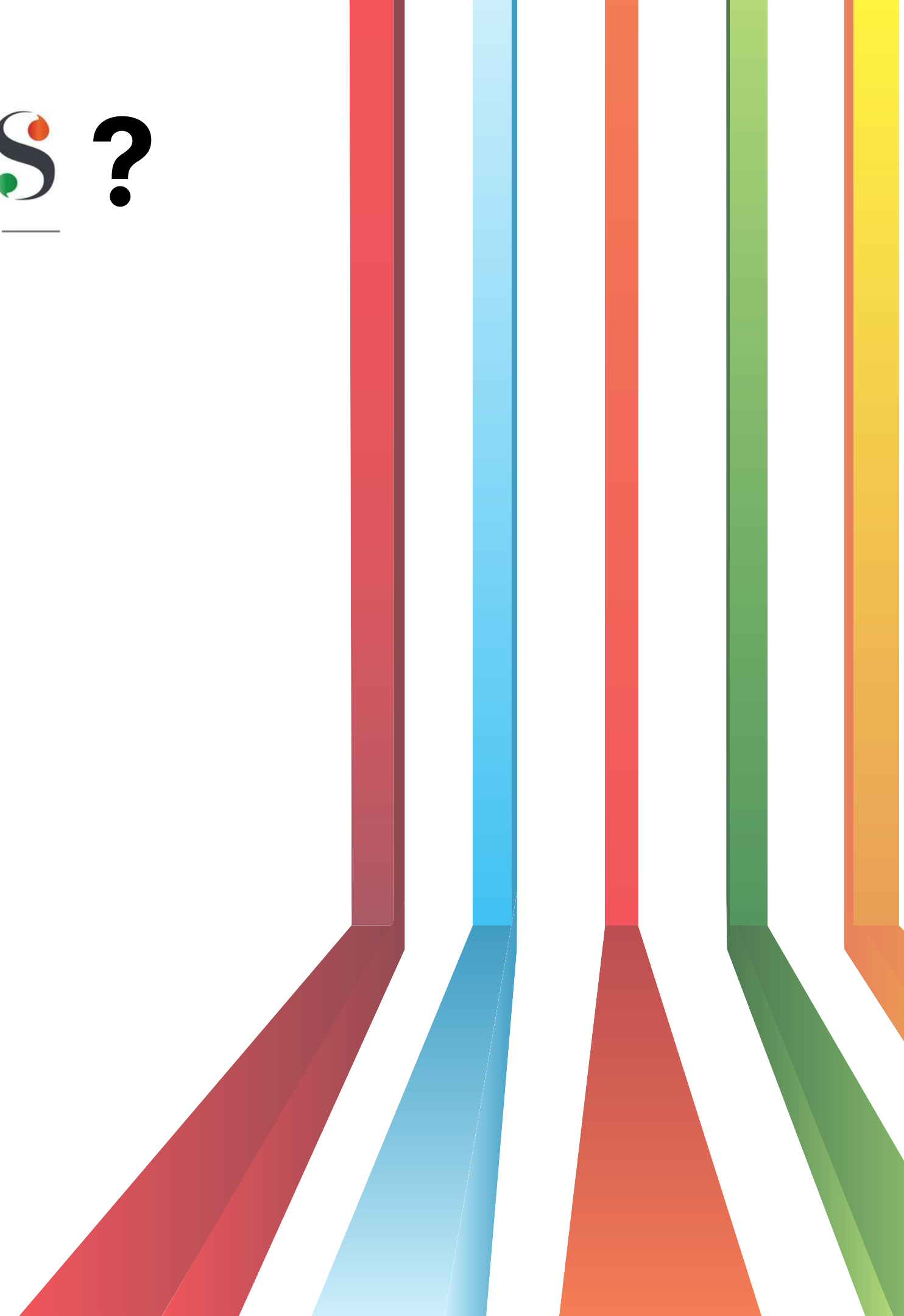


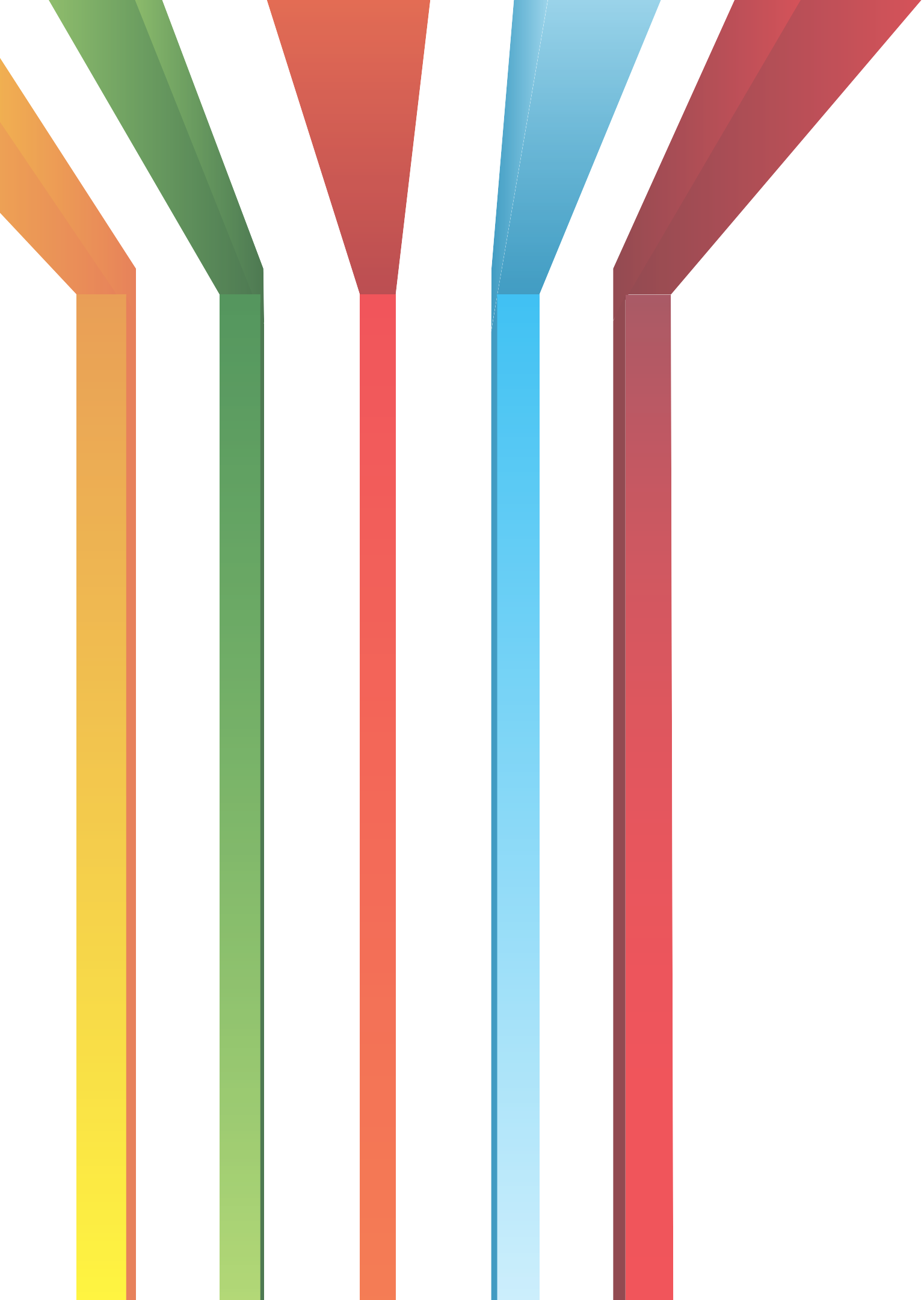
REPLICA

# WHY JOYOUS ?

—your home your joy—

- Apartment facing either green area or road
- Ample natural light
- Aesthetically designed foyer entrance
- Excellent Carpet Area
- Wide Balconies
- Ingenious and efficient
- Modern and Minimalist features
- Clean structure and soothing neutral colors



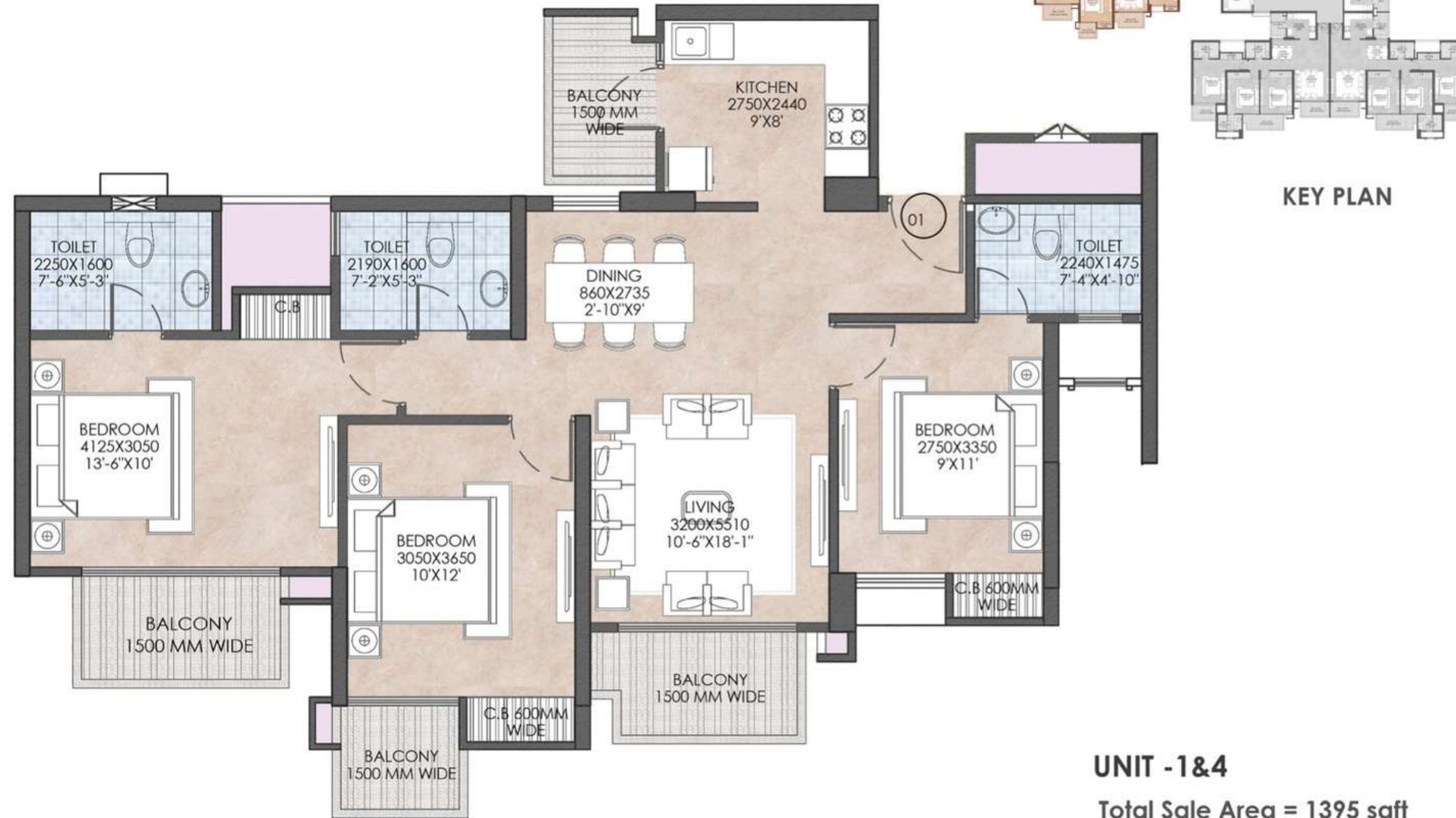


# **FLOOR & UNIT PLANS**



**TOWER -1**





**KEY PLAN**

**UNIT - 1&4**  
 Total Sale Area = 1395 sqft  
 Total Built up Area = 1130 sqft  
 Total Rera C.a = 875 sqft

**TOWER - 1**





**KEY PLAN**

**UNIT -2,3,5&6**

Total Sale Area = 1575 sqft

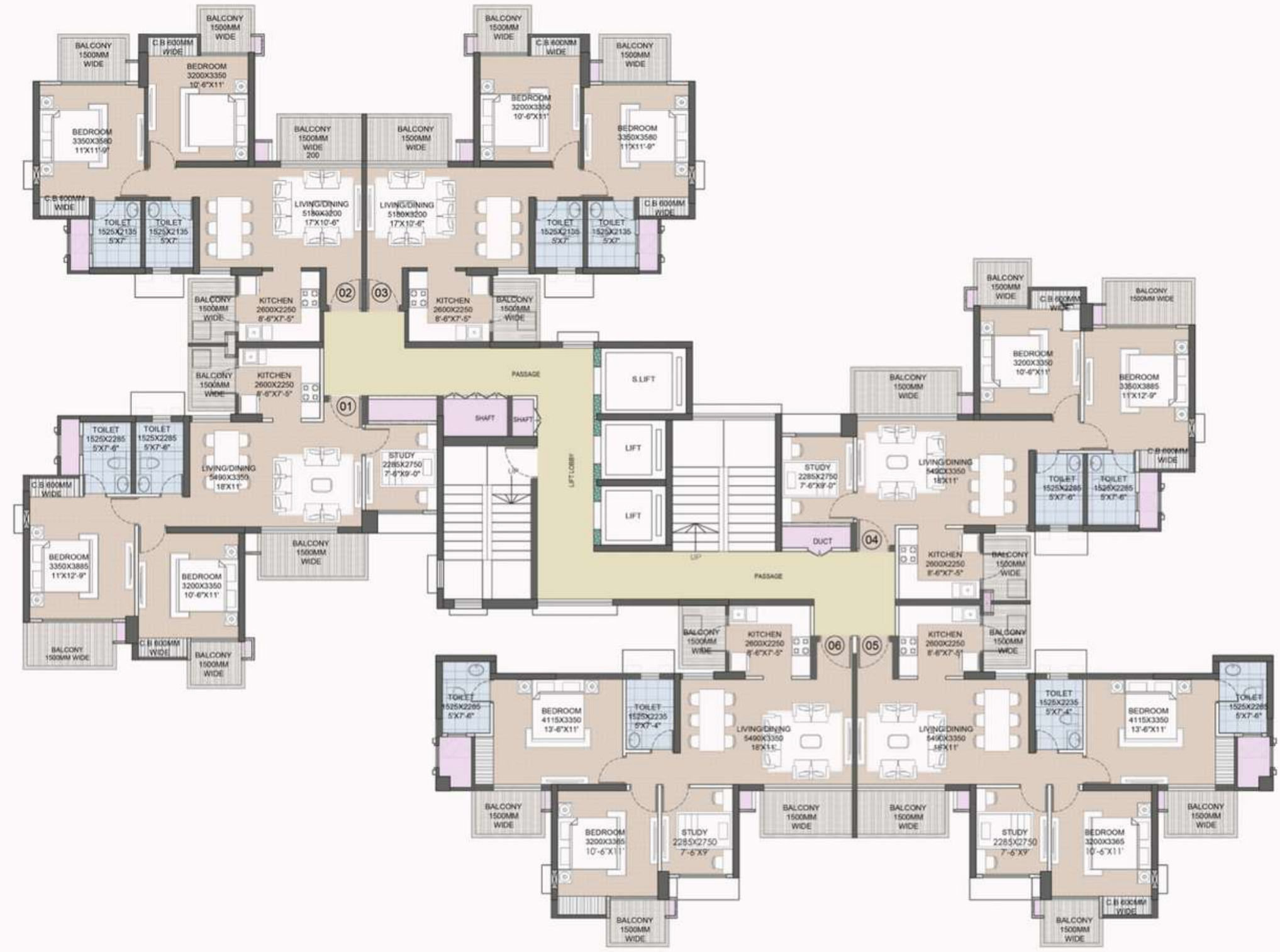
Total Built up Area = 1277 sqft

Total Rera C.a = 991 sqft

**TOWER -1**







**TOWER -4**





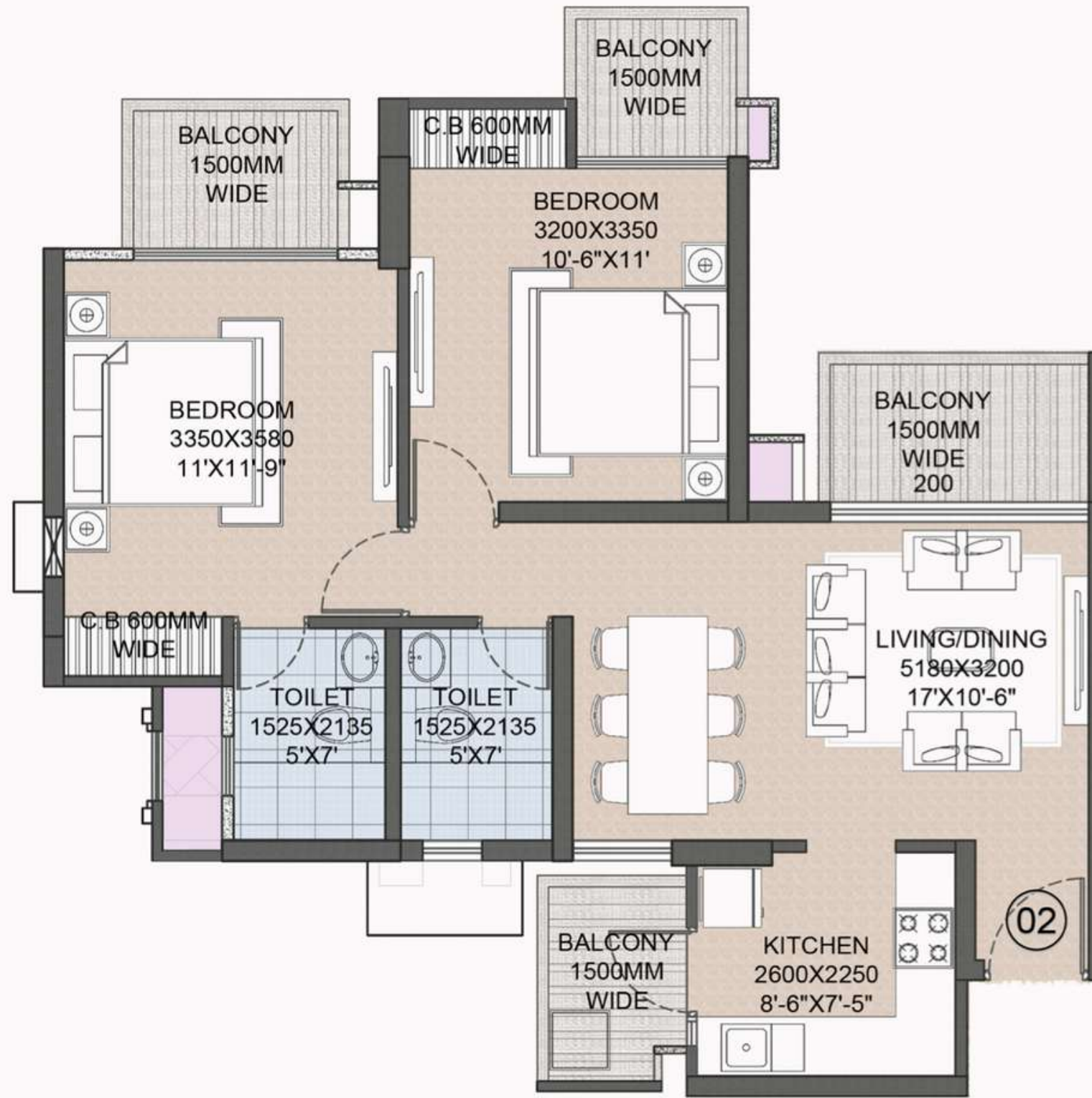
**KEY PLAN**

**UNIT -1&4**

Total Sale Area = 1230 sqft  
 Total Built up Area = 1010 sqft  
 Total Rera C.a = 736 sqft

**TOWER -4**





**KEY PLAN**

**UNIT -2&3**

Total Sale Area = 1040 sqft

Total Built up Area = 872 sqft

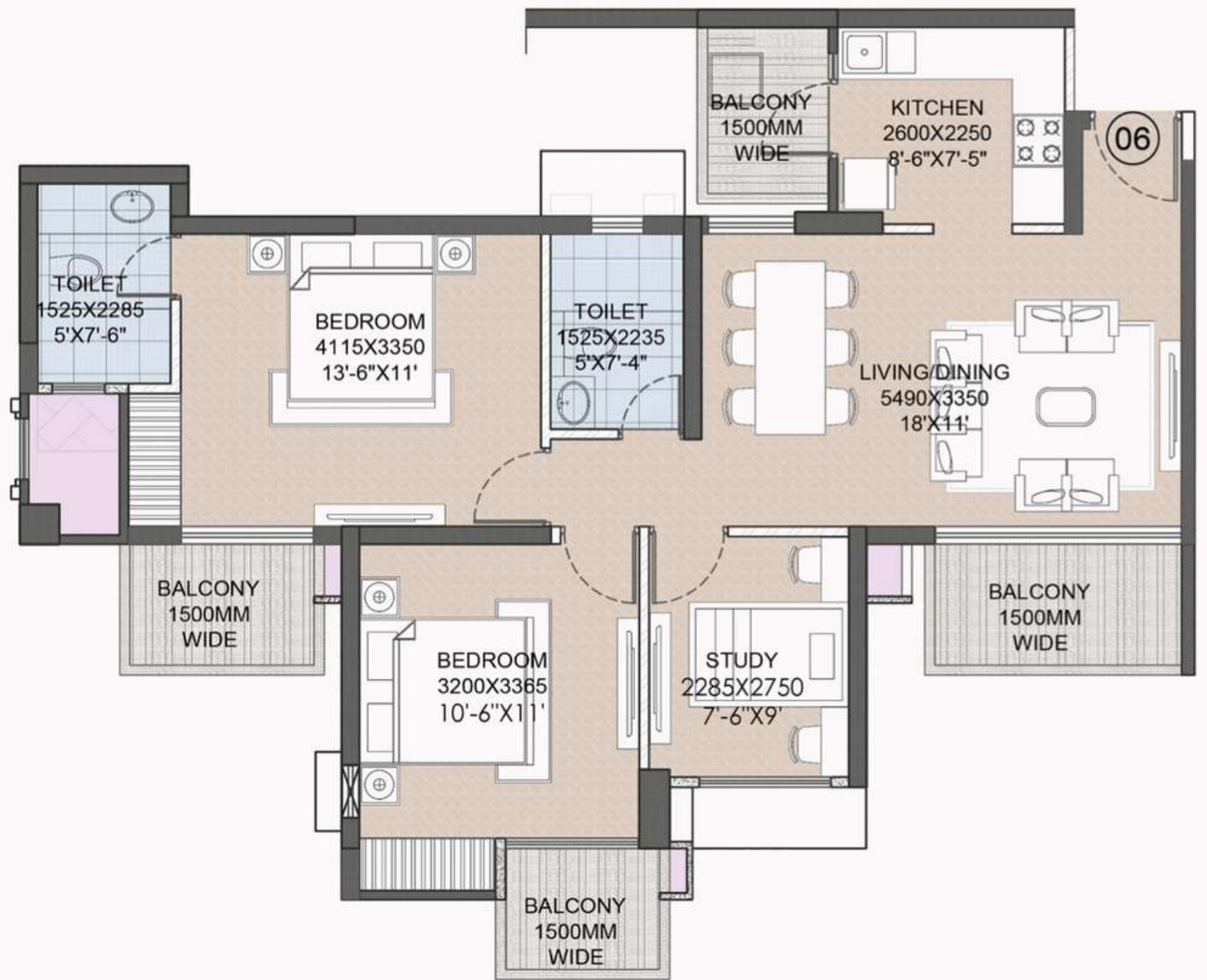
Total Rera C.a = 637 sqft

**TOWER -4**





**KEY PLAN**



**UNIT -5&6**

Total Sale Area = 1230 sqft  
 Total Built up Area = 1010 sqft  
 Total Rera C.a = 736 sqft

**TOWER -4**



Experience Love, Experience Life  
Come, Experience Joyous

