

Palm Olympia



A grand *Saga*
of happiness and *Joy*





Palm
Olympia

Sam India - Foundation built on trust & performance.

Having more than a decades experience in the construction arena, Sam India has taken giant strides in the development of real estate projects. With in house construction team headed by highly experienced and qualified engineers, architects and technocrats, the group is today recognised for its high quality of construction and technical standards.

It is through groups strict commitment to quality, on-time delivery of projects and customer friendly approach which offers consumers true value for their investment, that the group has carved for itself an exclusive niche in the real estate segment.

The great success of our past projects has established us firmly as the leaders in offering high quality residential projects.

The first phase of PALM OLYMPIA launched in Greater Noida (West) is completely sold out & today it is a benchmark for the host of amenities and features it is going to offer to its valued patrons. The tremendous response to Phase I and numerous queries from prospective customers has encouraged us to launch Phase II of PALM OLYMPIA. It is a golden opportunity for you to become a part of this impressive residential development.

*Get more out
of your moments*

- Green & Gated Community
- Earthquake Resistant Structure
- Ample Parking Space
- 100% Power Back up for Essential Services
- Manicured Landscapes
- Unmatched Neighborhood Amenities



Magnificent architecture which inspires and allures.

PALM OLYMPIA has been designed to offer maximum comfort to residents with optimum utilization of space, natural light and ventilation.

Spread over 25 acres, PALM OLYMPIA offers 2/3/4 bedroom apartments in a well laid out gated community development. The zoning of the entire project has been done to assure ease of access to its numerous activity areas for all the residents. The entire project is dotted with exquisitely designed - manicured gardens and pathways. Separate play areas for kids, sitting areas for elderly, peripheral vehicular access, high level of safety and security have been some of the priorities in designing of the project.

Large Balconies overlooking lush green spaces, spacious rooms with ample daylight and ventilation, optimum space utilization, without compromising on the privacy and personal space of residents are the key highlights of its interiors.

An excellent investment opportunity.

Patrons who had invested in PALM OLYMPIA Phase I have enjoyed tremendous appreciation in their investment, due to its prime features, great location and rapid pace of construction. With Phase I nearing completion, the much awaited launch of Phase II offers another great opportunity to prospective home buyers and investors, to benefit from a successful ongoing project.

*A privileged welcome
in the lap of luxuries*

- Service Apartments
- Entry Plaza
- Water Bodies
- Commercial Zone (with Separate Entry / Exit)
- Central Greens



Palm
Olympia



Club your desires and fulfill them all.

The club at PALM OLYMPIA will boast of an eclectic assortment of pastimes, hobbies, activities and invigorating sports and fitness facilities, among other things. Two Integrated Sports Corridors - including a gymnasium, spa, squash courts, Olympic sized swimming pool, jogging track etc. will add to the luster and grandeur of the sprawling club house.

- Club House
- Professionally Managed Well Equipped Gymnasiums
- All Weather Covered Swimming Pool



*Club your desires
& fulfill them all*

- Lawn Tennis Courts
- Indoor Squash Courts
- Swimming Pools, One Olympic Size
- Skating Rink
- Table Tennis Hall
- Cricket Practice Net
- Long Jogging Track
- Basket Ball Courts
- Badminton Courts





Palm
Olympia

Everything you want and more.

Thoughtfully designed with a bias to green living, at PALM OLYMPIA, you will feel fresher, breathe deeper & relax in complete leisure. The views naturally, will be equally invigorating.

PALM OLYMPIA is a privileged 25-acre green & gated community with avenue trees, parks and wide well lit roads, assuring you the life you always desired. The complex will boast of 2 tier security controlled entrances for pedestrians, bicycles & automobiles and accentuated by a closed perimeter of walls and fences.

- Amphitheater
- Banquet Hall
- Food Court & Coffee Shop
- Dispensary & Pathological Lab
- AC Unisex Beauty Salon
- ATM with a Small Bank Branch
- 2 Tier Security System with CCTV

*Everything you want
& much more*





Specifications

Structure External Finish

Earthquake Resistant RCC framed Structure Texture Paint with Pleasant Colour Combinations.



Dining & Drawing Room

Floor : Vitrified Tiles

Walls & Ceiling : JK Wall Putty & Painted with Pleasing Shades of O.B.D.



Master Bed Rooms

Floor : Vitrified Tiles/ Wooden Laminated

Walls & Ceiling : JK Wall Putty & Painted with Pleasing Shades of O.B.D.



Kitchen

Floor : Vitrified Tiles/ Antiskid Tiles
Ceramic Glazed Tiles upto 2 fit above Counters

Walls & Ceiling : JK Wall Putty & Painted with Pleasing Shades of O.B.D.

Platform : Pre -polished Granite Platform with Stainless Steel Sink



Toilets

Floor : Anti Skid Ceramic Tiles

Walls : Ceramic Tiles up to door level

Fitting / Fixtures : All taps chrome plated, W.C., Wash Basin in all toilets, provision for Hot and cold Water system



Balconies

Floor : Anti Skid Ceramic Tiles with safety railing

Other Bed Rooms

Floor : Vitrified Tiles



Electrical

Wire : Copper concealed Wires

Intercom / TV : Intercom facility and provision for DTH Connection

Power Backup : On Demand (1 KVA free)

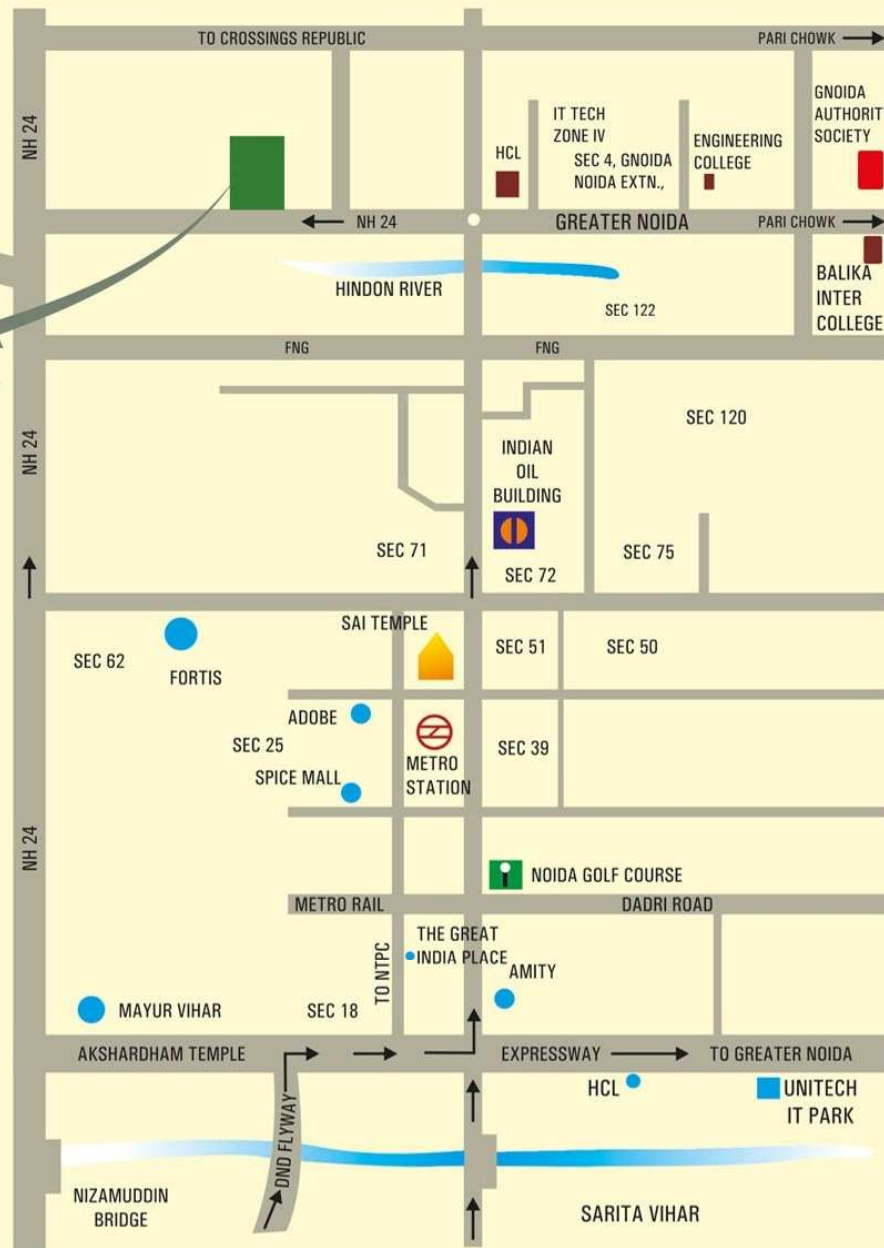


Doors & Windows

Entrance Door : Seasoned hardwood frames, Flush Door Shutter with one side teak finish and polish

Internal Door Frames : Seasoned hardwood frames with flush door shutter duly painted

External Doors & Windows : Powder Coated Aluminum Glazed / Equivalent



*Map not to scale.

Location Advantage

PALM OLYMPIA is situated on 25 acres of landscaped greenery at Greater Noida (West). It is well connected to the City Centre Metro Station & just 3 kms away from NH-24. The location is ideal for cutting commute time to important business and leisure hubs of Delhi NCR.

- **PALM OLYMPIA is situated 11 km. from Kalindi Kunj**
- **Only 10 km from City Centre Metro Station**
- **Just 3 km from NH-24**



Design Associates

Design Forum International (DFI), a team of three alumnus of IIT Kharagpur are the architects for the Project. They have delivered residential and commercial projects of international standards. DFI has an enviable track record of the best turn around times, with the most innovative of the approaches.

With its modern architecture, PALM OLYMPIA has been carefully designed by renowned architectural firm – Design Forum International (DFI).

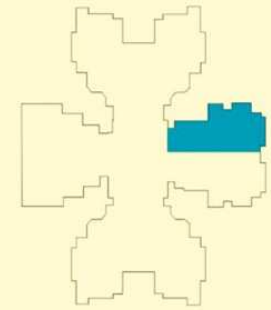




Super Area 1232 Sq. Ft. (114.46 Sq. Mtr.)

Covered Area 1018 Sq. Ft.

2 Bedrooms + 2 Toilets

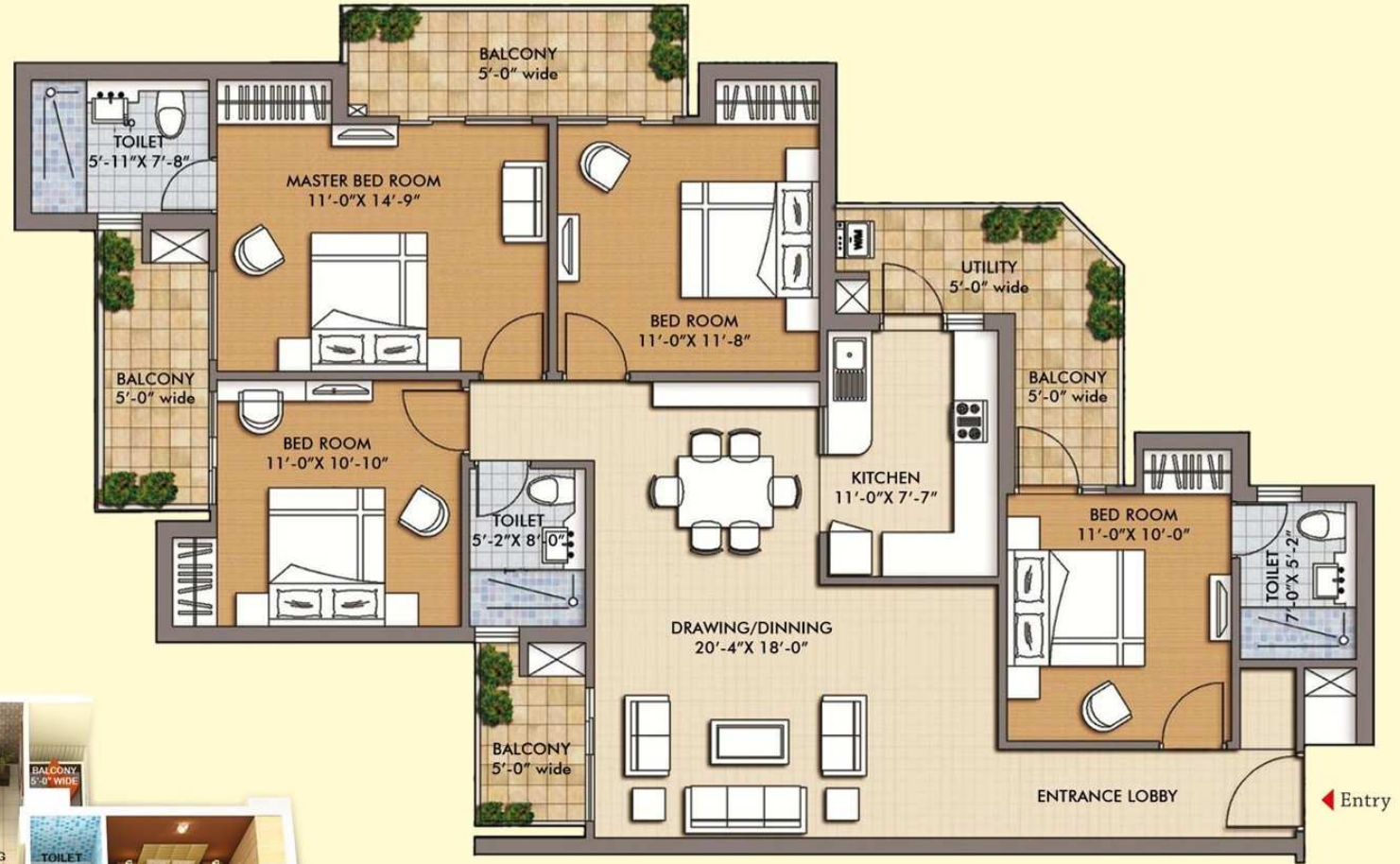


Super Area 1517 Sq. Ft. (140.93 Sq. Mtr.)

Covered Area 1253 Sq. Ft.

3 Bedrooms + 3 Toilets





Super Area 1906 Sq. Ft. (177.07 Sq. Mtr.)
 Covered Area 1575 Sq. Ft.
 4 Bedrooms + 3 Toilets

Site Plan



Legend

1 Service Apartments	6 Entry / Exit For Commercial
2 Icon Tower	7 Entry / Exit for Residential
3 Entry Plaza	8 Central Green
4 Water Body	9 Club
5 Commercial	10 Amphitheater

Sports

11 Cricket Nets	16 Badminton Courts
12 Skating Rink	17 Swimming Pool
13 Volleyball Courts	18 Sports Walk
14 Basketball Courts	19 Jogging Track
15 Tennis Courts	20 Tot Lot





SITE ADDRESS

Plot No. GH - 02, Sector - 16 C,
Greater Noida (West),
Gautambudh Nagar, UP - 201308
Mob: +91 97171 69994 / 95 / 96
Email: sales@palmolympia.com

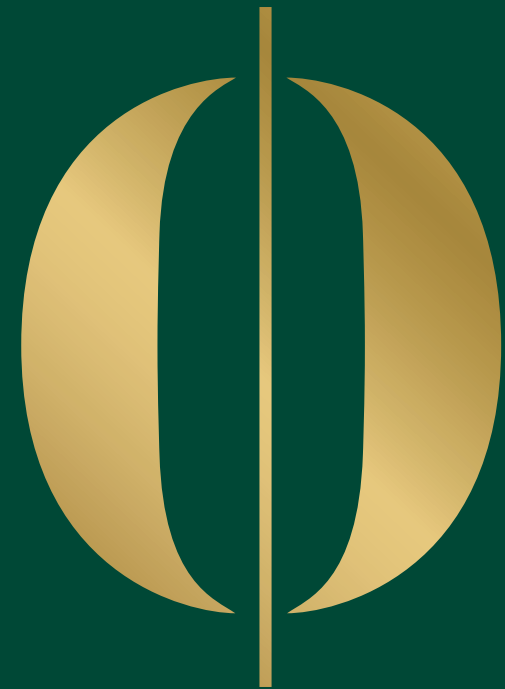
PROMOTER ADDRESS

Sam India Abhimanyu Housing
309, Jaipuria Plaza, Sector 26, Noida,
Gautambudh Nagar, UP - 201301
Ph: +91 120 4136147
Email: sales@palmolympia.com
Website: www.palmolympia.com

MEMBER of
CREDAI

Disclaimer: All designs, perspectives, elevations, specification, layouts plans, etc. and indicative are subject to change. Accessories shown in some of the pictures in this brochure such as furniture, cabinets, electrical, appliances, light fittings, walls & floor textures, etc. are indicative / decorative are not part of the sale offered.





Palm
Olympia

A real good estate

Aerial View

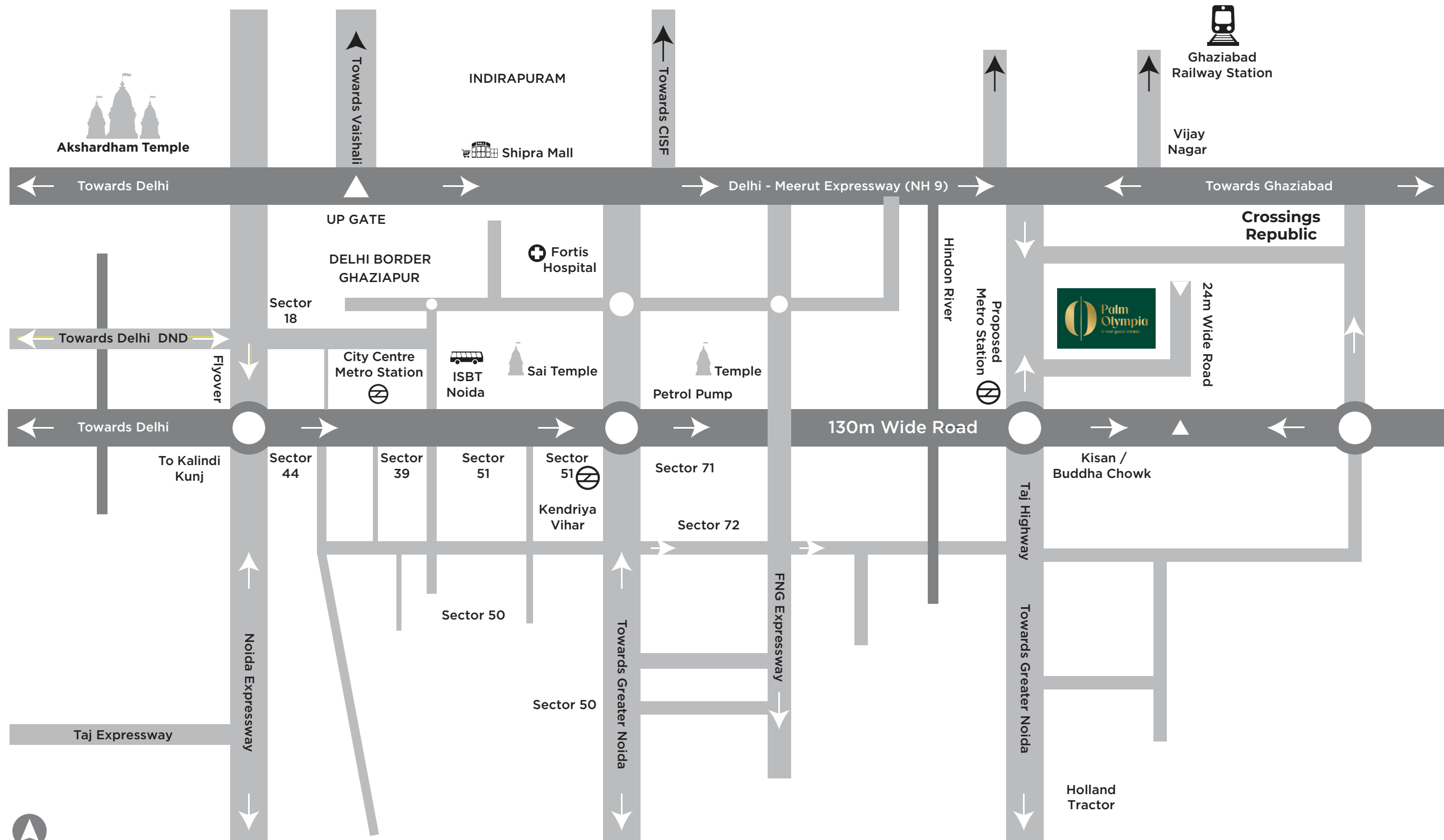


The aerial view incorporates
Palm Olympia Phase 2
and future developments



An
Address
To **Landmark**

Location Map



**Did you ever
dream of an address
that could turn into
a landmark?**

**Here it is. Located
amidst everything
convenient
and comfortable**

Palm Olympia is a jewel situated at Greater Noida West.
The location is ideal for rapid commute to important business
and leisure hubs of Delhi NCR.

20 min drive
from Akshardham
Temple

15 min drive from
Noida City Centre

3 km from
Delhi-Meerut
Expressway
(NH-9)

Situated
on 60 m wide
Taj Highway

1.3 km from
Kisan Chowk

2 km from
upcoming metro

Renowned
hospitals
within 5 km

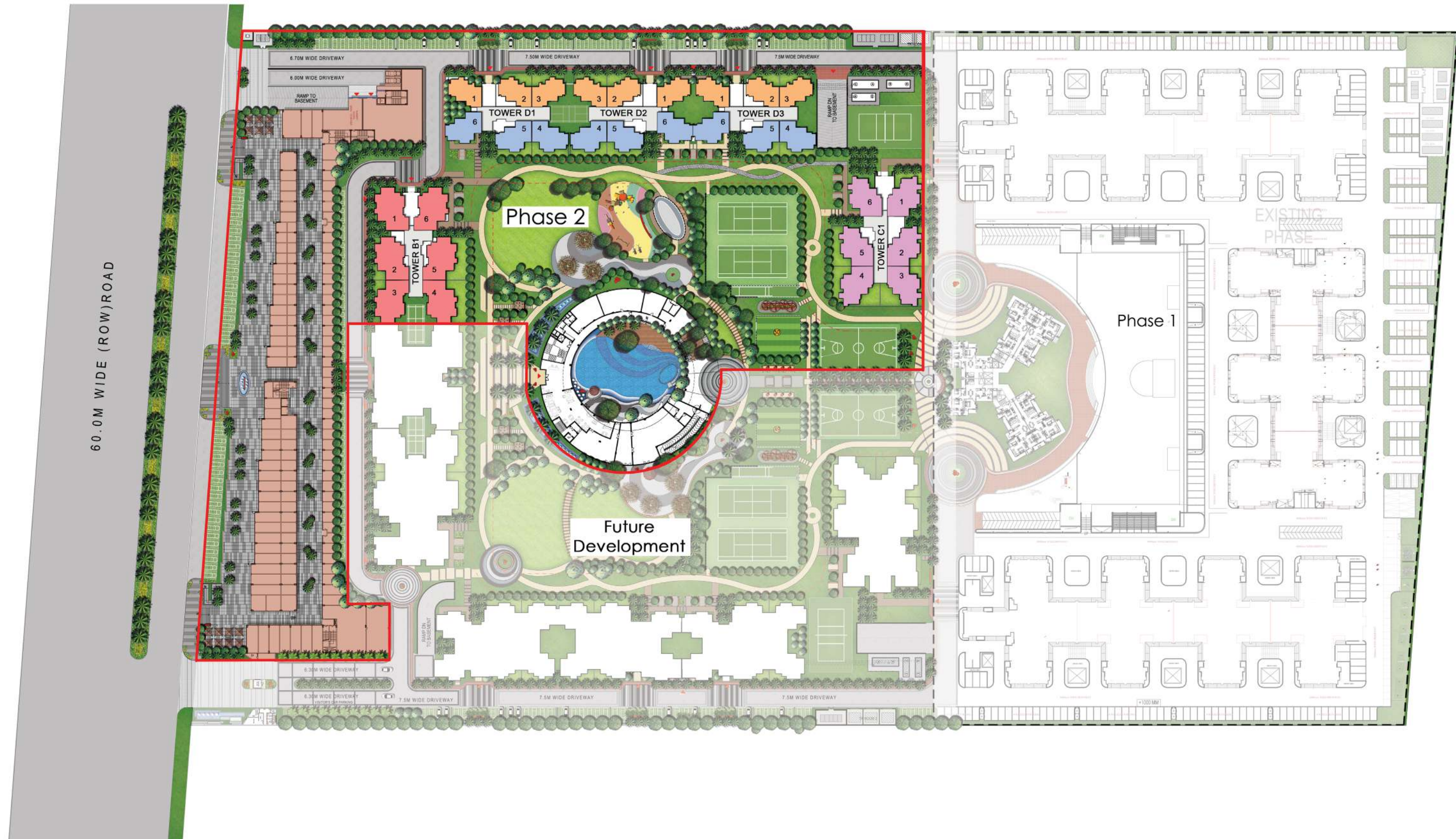
Prominent schools/
educational institutes
in the vicinity



Swimming Pool

Master Plan Phase 2

UPRERAPRJ308567



Master Plan Phase 2 and Future Development

60.0M WIDE (ROW) ROAD



LEGEND: LANDSCAPE ELEMENTS (RESIDENTIAL)

- 1 ARRIVAL COURT
- 2 ENTRANCE GATE COMPLEX
- 3 ENTRANCE WATER FEATURE
- 4 PALM AVENUE WITH LINEAR WATER CASCADE
- 5 RAMP TO BASEMENT PARKING
- 6 PERIPHERAL JOGGING TRACK (900M IN LENGTH)
- 7 TOWER DROP-OFF
- 8 TOWER SIGNAGE
- 9 CAR PARKING
- 10 BADMINTON COURT IN THE BASEMENT (3 NOS.)
- 11 PLAY ACTIVITIES IN STILT (HOPSCOTCH, TABLE TENNIS, ETC.)
- 12 TOWER ENTRY FROM GREENS
- 13 FRAGRANCE GARDEN WITH LINEAR SITTING
- 14 YOGA LAWN
- 15 APARTMENT PRIVATE GARDEN
- 16 TRAFFIC ROTARY WITH ACCENT PAVING
- 17 MOUND WITH SCULPTURE
- 18 CIRCULAR PLAZA
- 19 CENTRAL PARK PATHWAY/ JOGGING TRACK
- 20 CLUB ARRIVAL PLAZA
- 21 CLUB WATER FEATURE
- 22 REFLEXOLOGY PATH
- 23 GARDEN PAVILIONS IN YOGA/ MEDITATION GARDEN
- 24 POOL DECK
- 25 MAIN SWIMMING POOL WITH INFINITY EDGE
- 26 LAP LENGTHS (2 NOS.)
- 27 KIDS' POOL
- 28 WATER FEATURE AT INFINITY EDGE
- 29 PARTY DECK
- 30 ELLIPTICAL SEATING WITH ORNAMENTAL TREES
- 31 SUNKEN SITTING WITH METAL CANOPY
- 32 OPEN AIR THEATRE
- 33 CELEBRATION PLAZA
- 34 BANQUET ENTRANCE CANOPY
- 35 CURVILINEAR PLAZA
- 36 METAL ARBOR WITH BOUGAINVILLEAS
- 37 CURVILINEAR SITTING
- 38 PATHWAY THRU FRAMES
- 39 MOUND WITH DENSE PLANTATION
- 40 BANQUET LAWN
- 41 BANQUET FEATURE WALL
- 42 MULTI-PURPOSE LAWN
- 43 KIDS' PLAY AREA
- 44 OUTDOOR GYM
- 45 SKATING RINK
- 46 SITTING UNDER TENSILE CANOPIES
- 47 TENNIS COURTS (4 NOS.)
- 48 BASKETBALL COURTS (2 NOS.)
- 49 BOX CRICKET
- 50 BOX FOOTBALL
- 51 SITTING UNDER METAL CANOPIES
- 52 FEATURE GREEK COLUMNS
- 53 PATHWAY THRU PORTALS
- 54 VOLLEY BALL COURTS (2 NOS.)
- 55 SITTING UNDER PERGOLA
- 56 CRICKET NET PRACTICE (2 NOS.)
- 57 PET GRADEN
- 58 BOUNDARY PLANTATION

Twilight View

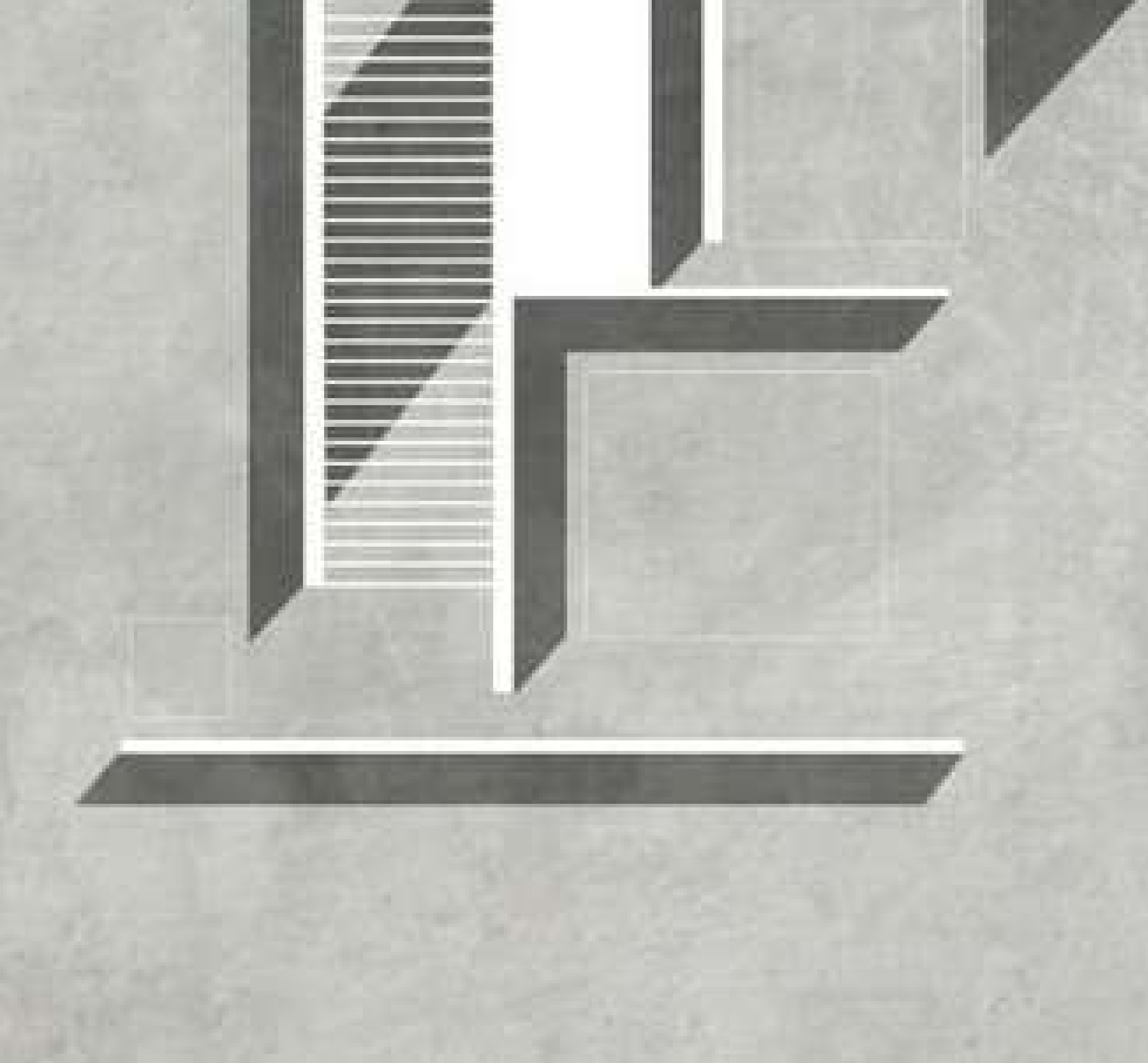


Club House Entrance





Club House



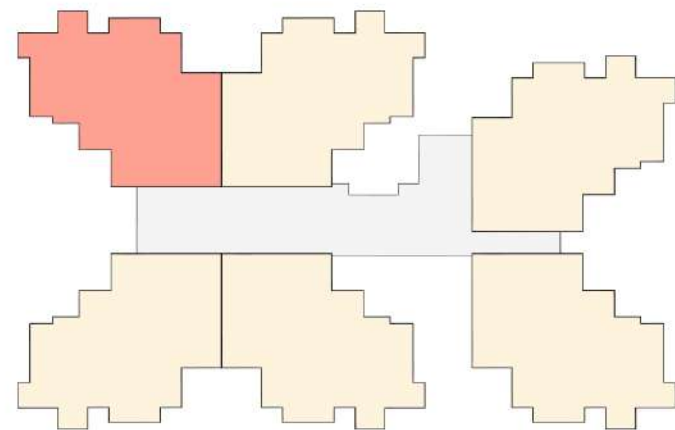
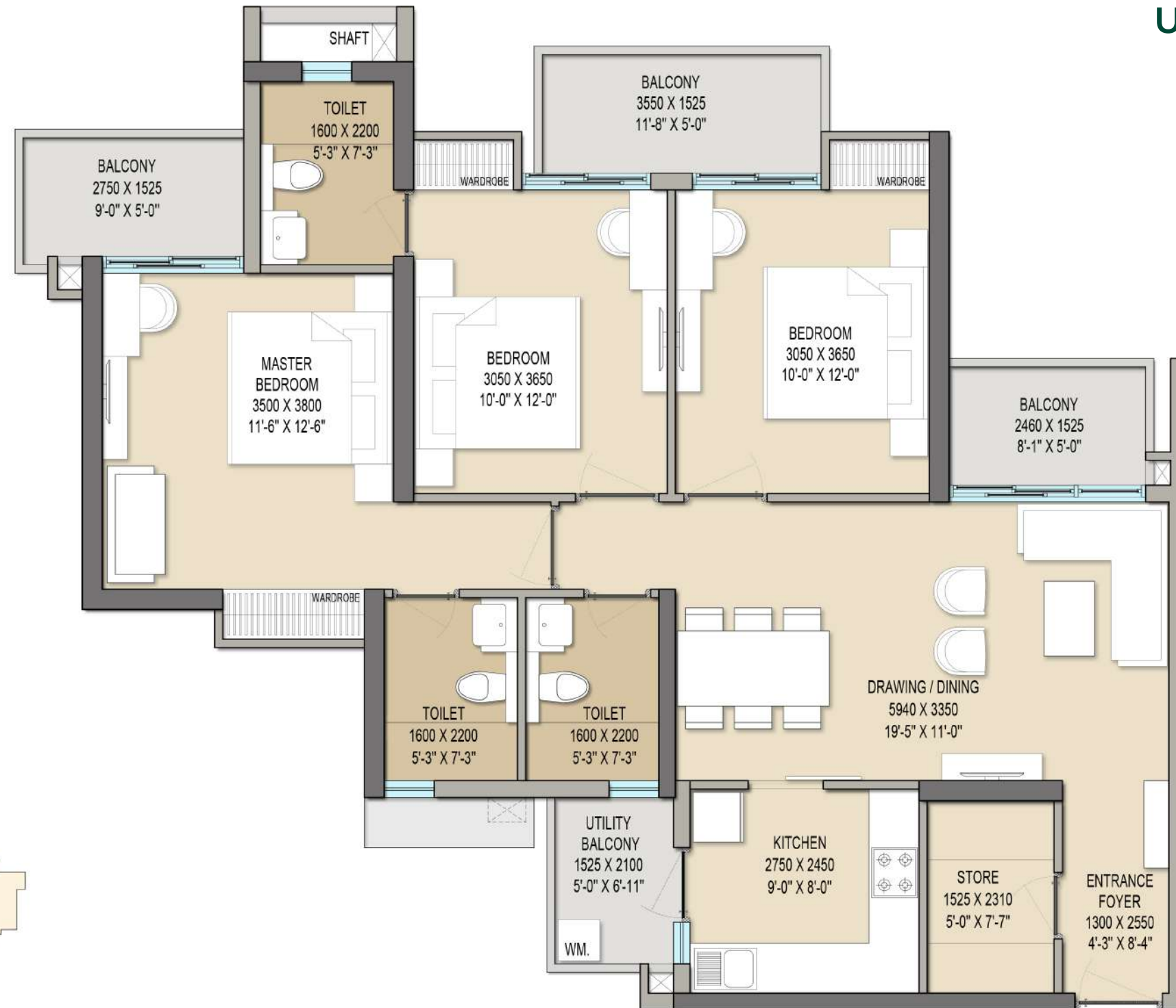
TOWER PLANS



TOWER C

UNIT PLAN

3BHK + 3T + UTILITY
 SALABLE AREA = 1608 Sqft.
 CARPET AREA = 967.51 Sqft.
 BALCONY AREA = 183.63 Sqft.
 BUILT-UP AREA = 1257.67 Sqft.



KEY PLAN

TOWER D UNIT PLAN

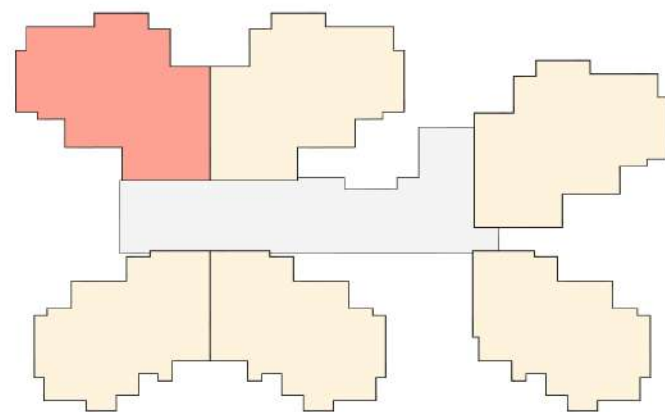
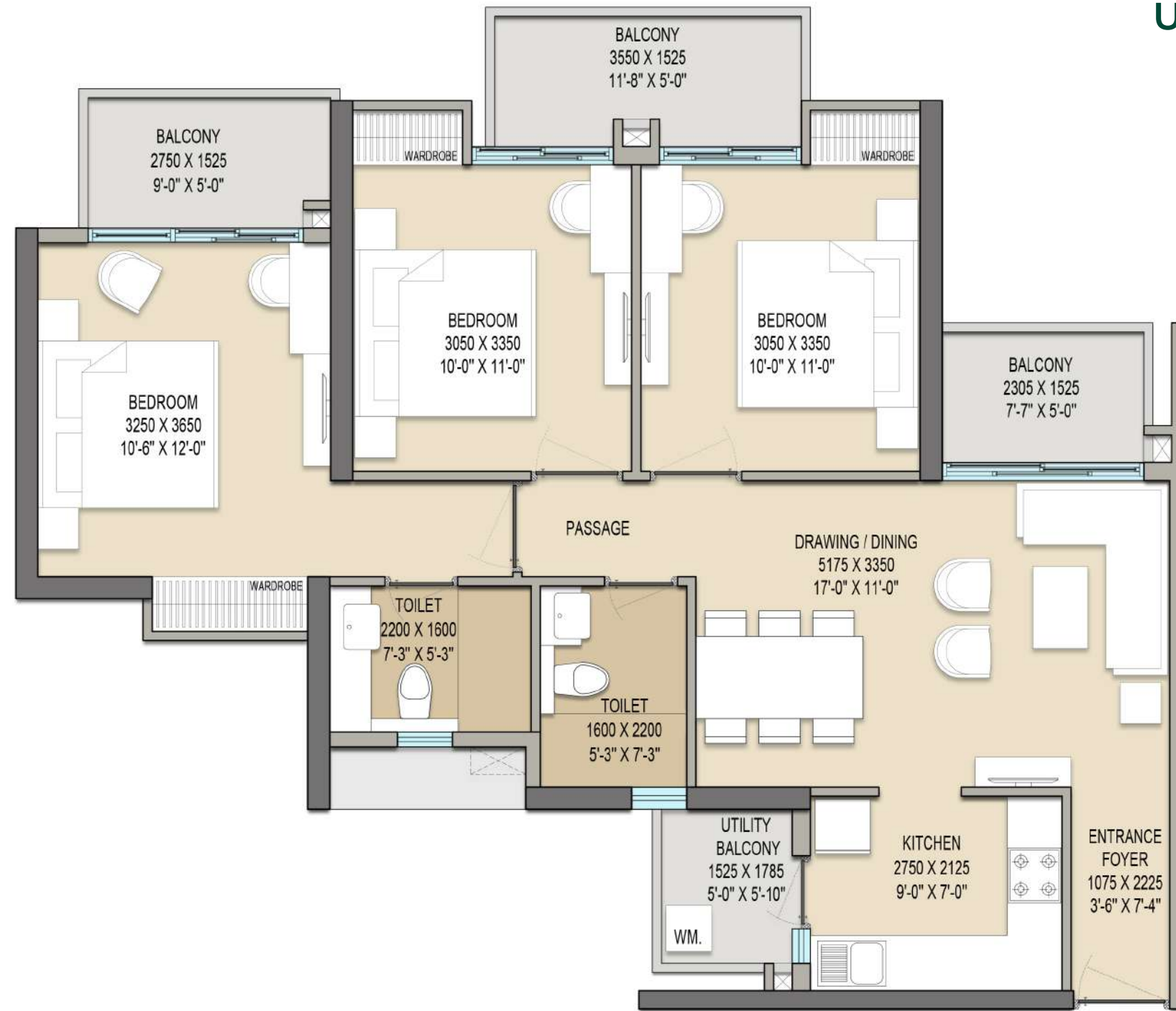
3BHK + 2T

SALABLE AREA = 1357 Sqft.

CARPET AREA = 800.41 Sqft.

BALCONY AREA = 170.16 Sqft.

BUILT-UP AREA = 1063.50 Sqft.



KEY PLAN

TOWER D

UNIT PLAN

TOWER - D

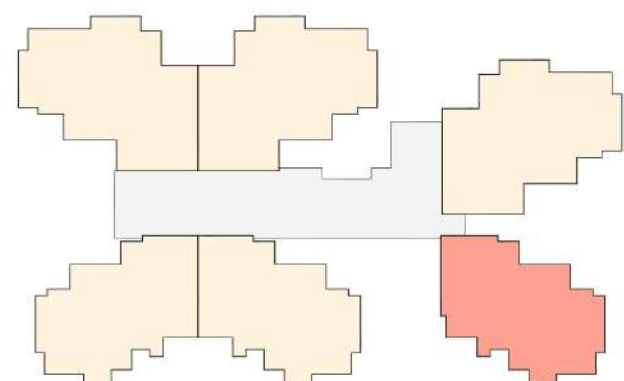
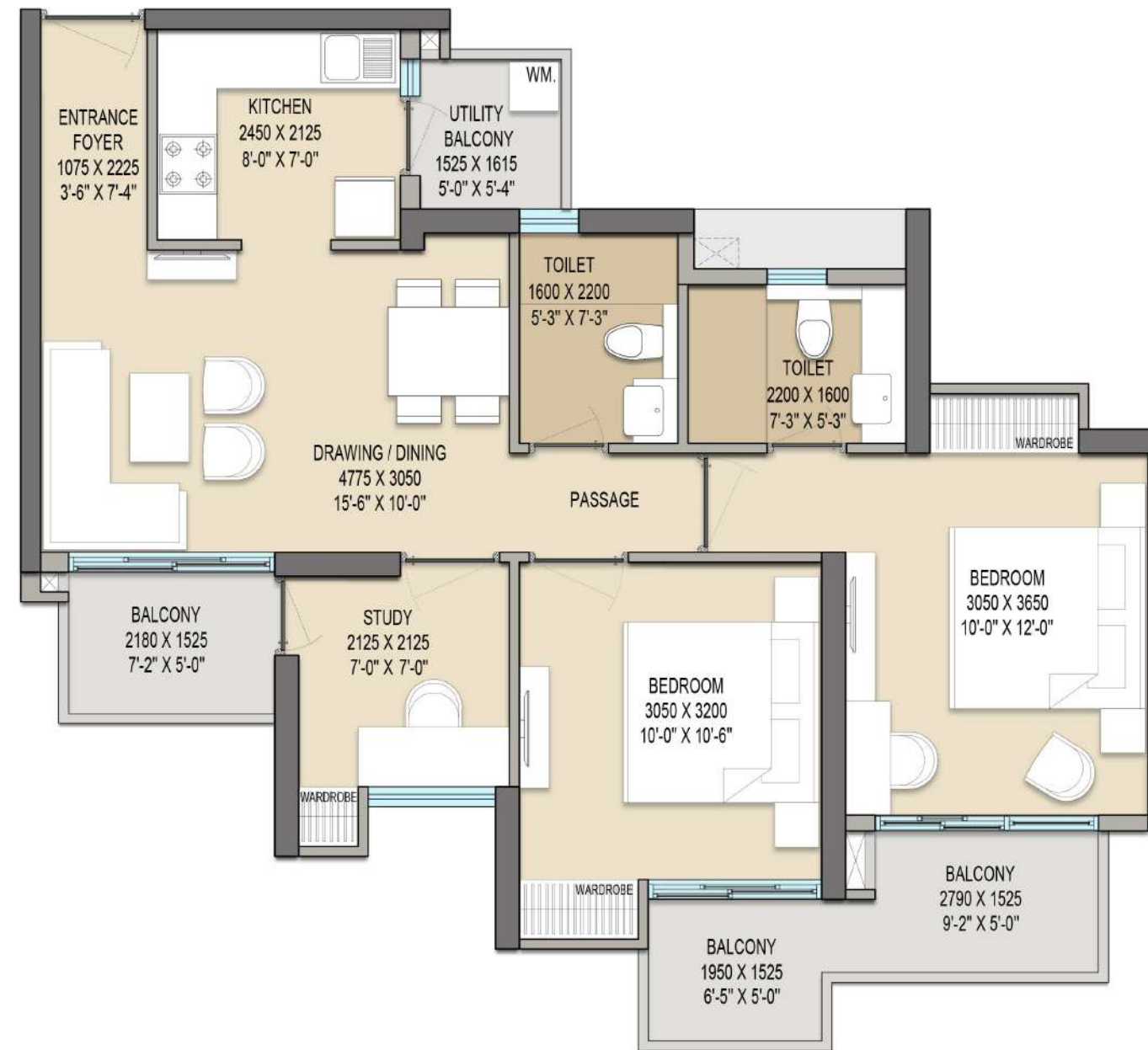
2BHK + 2T + STUDY

SALABLE AREA = 1182 Sqft.

CARPET AREA = 677.23 Sqft.

BALCONY AREA = 138.81 Sqft.

BUILT-UP AREA = 902.46 Sqft.



KEY PLAN

Specifications

AREA	FLOORING	CEILING	WALL	INTERNAL DOORS	EXTERNAL DOOR / WINDOWS / RAILINGS	AIR CONDITIONING	SAFETY AND SECURITY	PLUMBING FIXTURES
ENTRANCE FOYER	Large Format Vitrified Tiles or equivalent (minimum size 800mm x800mm)	Ceiling painted	P.O.P punning/ Putty. Finish with Acrylic Emulsion paint.	Main Entrance Door 8' (2400 mm) High. Both Side Veener Polished flush Doors with hardwood door frame; main door to be provided with Digital Lock		-	Main door to be provided with Digital Lock and Video Door phone will be installed	-
DRAWING + DINING	Large Format Vitrified Tiles or equivalent (minimum size 800mm x 800mm)	Ceiling painted	P.O.P punning/ Putty. Finish with Acrylic Emulsion paint.	-	UPVC Door/ Windows as applicable	Ac points along with drain and copper piping shall be provided.		-
MASTER BEDROOM	Large Format Vitrified Tiles or equivalent (minimum size 800mm x 800mm)	Ceiling painted	P.O.P punning/ Putty. Finish with Acrylic Emulsion paint.		UPVC Door/ Windows as applicable	Ac points along with drain and copper piping shall be provided.		-
MASTER TOILET	Large Format Vitrified Tiles or equivalent (minimum size 600mm x 600mm)	Grid False Ceiling	Vitrified tiles up till ceiling height & Polished granite on Counter.	7' 5" (2250 mm) High laminated flush Doors	UPVC Door/ Windows as applicable			High quality, branded Chinaware and c.p. fittings, (Wall hung W.C., Diverter, Over the Counter W.B) CP Fittings Brand : Grohe/ Jaguar/Hindware or equivalent Chinaware Brand - Kohler / Vitra or equivalent
ALL OTHER BEDROOMS	Large Format Vitrified Tiles or equivalent (minimum size 800mm x 800mm)	Ceiling painted	P.O.P punning/ Putty. Finish with Acrylic Emulsion paint.	7' 5" (2250 mm) High laminated flush Doors	UPVC Door / Windows as applicable	Ac points along with drain and copper piping shall be provided.		-
ATTACHED TOILET	Large Format Vitrified Tiles or equivalent (minimum size 600mm x 600mm)	Grid False Ceiling	Vitrified tiles up till ceiling height & Polished granite on Counter.	7' 5" (2250 mm) High laminated flush Doors	UPVC Door / Windows as applicable			High quality, branded Chinaware and c.p. fittings, (Wall hung W.C., Diverter, Below the Counter W.B) CP Fittings Brand : Grohe/ Jaguar/Hindware or equivalent Chinaware Brand - Kohler / Vitra or equivalent
COMMON TOILET	Large Format Vitrified Tiles or equivalent (minimum size 600mm x 600mm)	Grid False Ceiling	Vitrified tiles up till ceiling height & Polished granite on Counter.	7' 5" (2250 mm) High laminated flush Doors	UPVC Door / Windows as applicable			High quality, branded Chinaware and c.p. fittings, (Wall hung W.C., Diverter, Below the Counter W.B) CP Fittings Brand : Grohe/ Jaguar/Hindware or equivalent Chinaware Brand - Kohler / Vitra or equivalent
KITCHEN	Large Format Vitrified Tiles or equivalent (minimum size 800mm x 800mm)	Ceiling painted	Vitrified tile Above counter (below space for overhead cabinet)	-	UPVC Door / Windows as applicable			Stainless Steel Sink with drain board
BALCONY	Wood textured Vitrified/Ceramic Tiles	Ceiling painted	Exterior grade texture paint	-	Glass with SS Railing			
UTILITY BALCONY	Anti-skid Vitrified Tiles	Ceiling painted	Exterior grade texture paint	-	Solid Parapet Railing	-		Point for Washing Machine

1. MAIN ENTRANCE LOBBY: Well designed, Grand entrance lobby with imported stone flooring

2. STRUCTURE: Monolithic structure casted in aluminum formwork technology (like Mivan)

3. LIFT LOBBY: Well designed, Aesthetic lobby with full body tile flooring

4. LIFTS: 3 Passenger Lifts & 1 Service Lift in all towers

5. ELECTRICAL FITTINGS AND FIXTURES (APARTMENT): Modular switches, copper wiring, concealed PVC conduits, Light & Power points. Provision for TV, Telephone, Intercom points in living room and all bedrooms. Provision for single wifi point only

6. SPECIFICATIONS: For Tower C1,D2 & D3

Developer

SAM INDIA



The mind

BEHIND THIS PRIZED POSSESSION

Sam India is a renowned leader in the construction industry, widely recognized for its exceptional commitment to timely project delivery and unwavering dedication. The company's passion for embracing cutting-edge technological advancements and innovative construction methodologies sets it apart from the competition. Currently, Sam India is undertaking the prestigious Housing for Members of Parliament in Delhi, as well as the depot for Mumbai Metro, among other endeavors. Its top notch quality ensures Sam India remains at the forefront of the ever-evolving construction industry, consistently delivering exceptional results.

Architect

Confluence
Consultancy services

The creator

BEHIND THE MEDAL

Palm Olympia Phase 2 is a ground breaking project redefining housing in Greater Noida (West). A landmark project conceived from a fine collaboration of hard-work and imminent stakeholders involved in designing this beauty.

Confluence Consultancy Services is known to celebrate sustainability and aesthetics in every endeavour. Our goal has always been to create spaces that are inclusive, seamless and natural. Palm Olympia is a reflection of this philosophy and has been designed to seamlessly blend with nature and life.

We are committed to deliver world-class awe-inspiring designs.



Site: Plot No. GH - 02, Sector - 16 C, Greater Noida (West)

Phase II: UPRERA NO. UPRERAPRJ308567

Disclaimer: While every attempt has been made to ensure the accuracy of the plans shown, all measurements, positioning, fixtures, fitting and any other data shown are an approximate interpretation for illustrative purposes only and are not to scale. No responsibilities taken for any error, omission, mis-statement or use of data shown. The company reserves the right to make changes in the plans, specifications, dimensions and elevations without any prior notice. 1 sq. ft. = 0.0929 sq. mt. 1 sq. mt. = 10.764 sq. ft. 1ft. = 0.305 mt. and 1mt. = 3.281 ft.